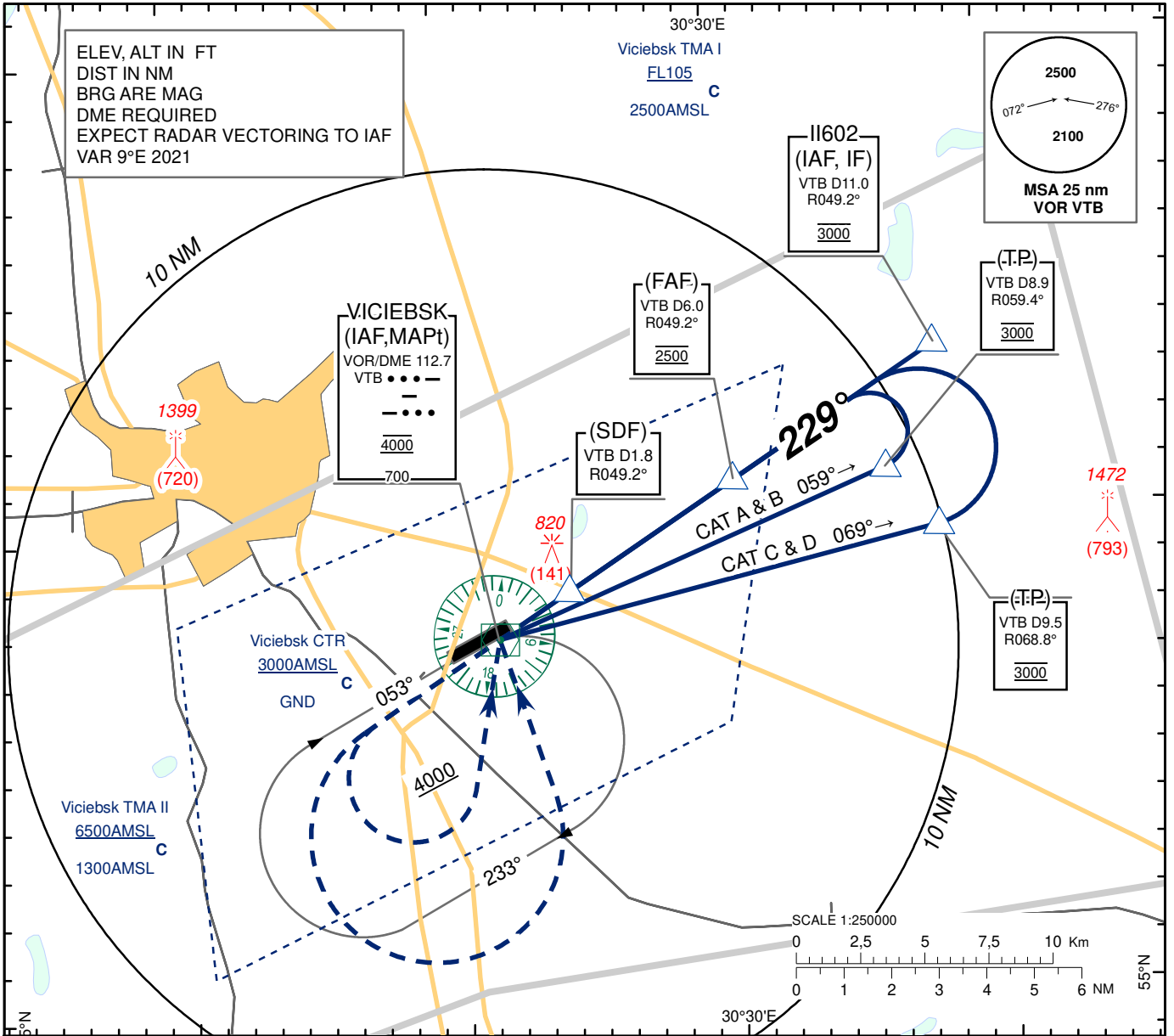


**INSTRUMENT
APPROACH
CHART - ICAO**

AERODROME ELEV 682
HEIGHTS RELATED TO
THR RWY 23 - ELEV 679

TWR 120.400
MET 119.425 (EN)
126.525(RUS)

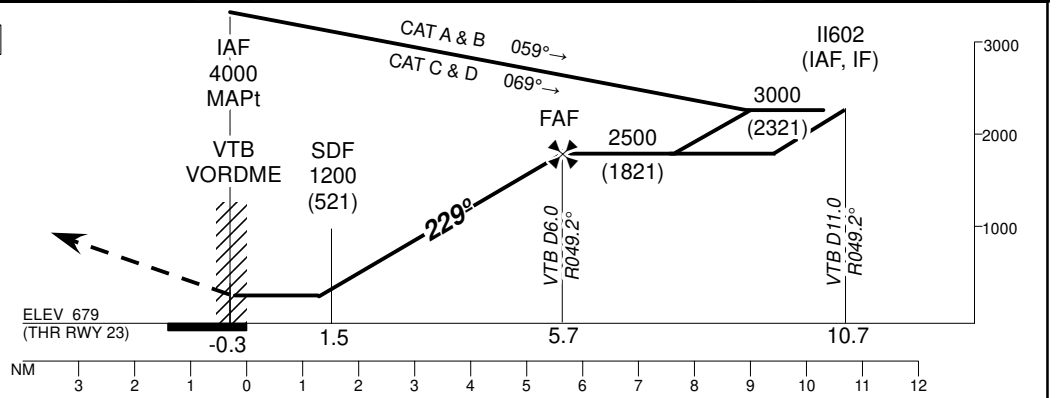
**VICIEBSK
VOR
RWY 23**



TRANSITION ALTITUDE: 6000

Alt set: hPa (mm on req)
QNH (QFE on req)

MISSED APPROACH
Climb STRAIGHT AHEAD
to 1500 (821) or above,
turn LEFT to VOR (VTB)
climbing to 3000 (2321)
and follow ATC instructions.



CHANGE: Magnetic VAR, OCH.

Aircraft Category		A	B	C	D									
Straight-in Approach OCA(H)	VOR/DME	1050 (370)				DME VTB	8	7	6	5	4	3	2	1
	Circle - to land	1150 (470)	1180 (500)	1320 (630)	1470 (790)	DIST THR	7.7	6.7	5.7	4.7	3.7	2.7	1.7	0.7
						ALTITUDE	2783	2528	2273	2018	1763	1508	1253	1077
						HEIGHT	(2104)	(1849)	(1594)	(1339)	(1084)	(829)	(574)	(398)
Timing not authorized for defining the MAPt														
						GS	Kt	80	100	120	140	160	180	
						Rate of descent	ft/min	420	530	640	740	850	950	

VICIEBSK
VOR
RWY 23

AERONAUTICAL DATA TABULATION

VOR approach to RWY23 from VTB VOR/DME, IAF	
Fix/point	Coordinates
II602 (IAF, IF) R 049.2° D11.0 VTB	551327N 030375E
(FAF) R 049.2° D6.0 VTB	551048N 0303026E
(TP) R 059.4° D8.9 VTB (V max 140 3.5MIN)	551055N 0303602E
(TP) R 068.8° D9.5 VTB (V max 210 2.5MIN)	550940N 0303751E
(SDF) R 049.2° D1.8 VTB	550838N 0302419E
(IAF) VTB VOR/DME	550740.4N 0302135.8E
THR RWY 23	550754.37N 0302203.81E2